



 **STRUCTURAL  
TIMBER  
AWARDS**  
**2024  
WINNER**  
SIPS PROJECT  
OF THE YEAR



**ECOLOGIC**  
SUSTAINABLE SIP STRUCTURES

**Build It**  
  
**AWARDS  
2023**  
**WINNER**  
Best SIPs Home

## Bespoke Eco-Homes

Our **custom SIPs structures** are designed to meet the unique needs of each client.

We specialise in creating one-of-a-kind units for **self-builders**.

We also cater to **developers** looking for multi-unit sites.

Our focus is on delivering **high-quality, tailor-made structures that exceed expectations.**



*'We only put the heating on overnight when we have a cheaper electric rate and the house holds enough heat during the day and into the evening to keep the ambient temperature around 21/22 degrees. We have never needed to have the heating on upstairs.'*

**KJ, Client Review, [Trustpilot](#)**

*'Ecologics SIPs kits are simply the best on the market (always flawless) and their customer service is second to none.'*

**J Burton, Client Review, [Trustpilot](#)**

## Ecologic SIPs

Reviews 70 • Excellent



✓ VERIFIED COMPANY

## High Performance

SIPs support a **fabric-first approach** to building structures by focusing on **reducing a home's heat loss**, you can achieve a **low-carbon**, sustainable house that's affordable to heat.

It's really about **maximising the insulation** and **airtightness**, managing solar gain through screening/shading and solar reflective glass, careful design of cross ventilation, and **minimising thermal bridging** with our pre-modelled details.



**First-ever SIP build and truly 5-star  
Crowding Bricks Developments, Chris Scorer, Developer**

*'Fantastic company that helped us step by step with our first ever SIP development for a 3-bedroom detached house. It was such a **pleasure to work with the team** and the speed, design and ease of the build compared to our normal traditional construction methods were incredible.*

*I would **highly recommend Ecologic SIP's** for anyone looking to do a new build property. In addition to the ease of the build the building achieved an **A rating EPC with a score of 97**. We will undoubtedly be moving forward with more projects working with Ecologic SIP's in the future'.*

It's no surprise that **developers** view our SIPs as an ideal choice for **multi-unit schemes**. With homebuyers and the UK Government prioritising **sustainability** and **lower energy bills**, our SIPs provide an exciting alternative to meet these demands—offering **higher EPC ratings, faster build times,** and **reduced energy costs** for more efficient homes.



**Everyone in our team shares a real sense of adventure and a love for the natural world.**

From our **bio-climatic designers** and **craftsmen builders** to our **STA SIPs accredited construction crews** and **Prince 2 qualified project managers**, we all believe in **inspiring change** within the building sector in a bid to become more sustainable as a construction sector. Follow our people on and learn more about our product innovations by **following us on [LinkedIn](#)**.

CARE INSPIRE CRAFT

Our **passion** and **over twenty years of experience** building with sustainable methods have inspired us to focus all our energy on **manufacturing and installing SIPs (structural insulated panels).**

Ultimately, our ambition is to **empower homebuilders** and **industry professionals** to create **design-led, eco-buildings** using **sustainably sourced materials** and **low-impact methods**





Our SIPs are designed and produced in-house at our **New Forest Workshop** with the highest level of precision, safety and quality - to **ISO9001** and **Structural Timber Association Gold Assure Member** standards.



**Inspired by the natural world** and the rich heritage that surrounds us, our team is committed to **exceptional craftsmanship** and using **sustainably harvested timber**. In a streamlined process, our workshop technicians cut, stack, and accurately number each panel wall by wall and roof by roof.

Our **bespoke design and cutting system** ensures that **waste is kept to an absolute minimum** and, where possible, any excess **materials are recycled or repurposed** on smaller-scale projects.



Our SIPs are fully **approved by Building Control authorities**, and we have strategic partnerships with **major structural warranty providers** and specialist **MMC mortgage providers**.

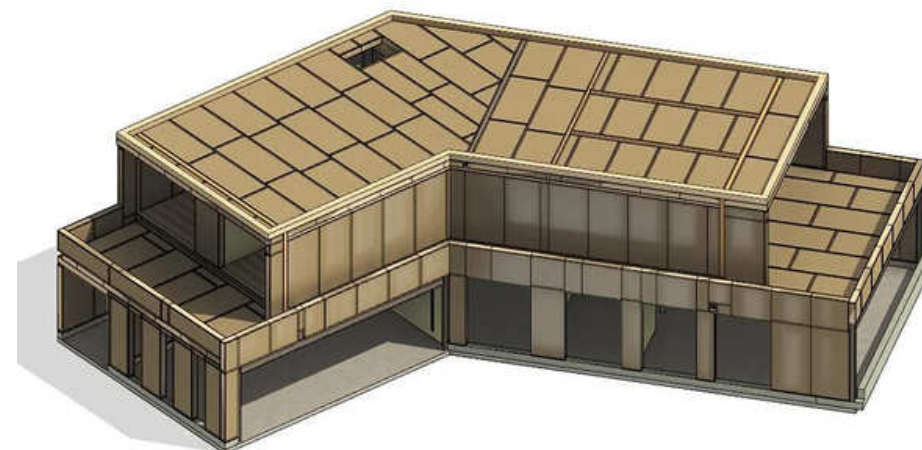
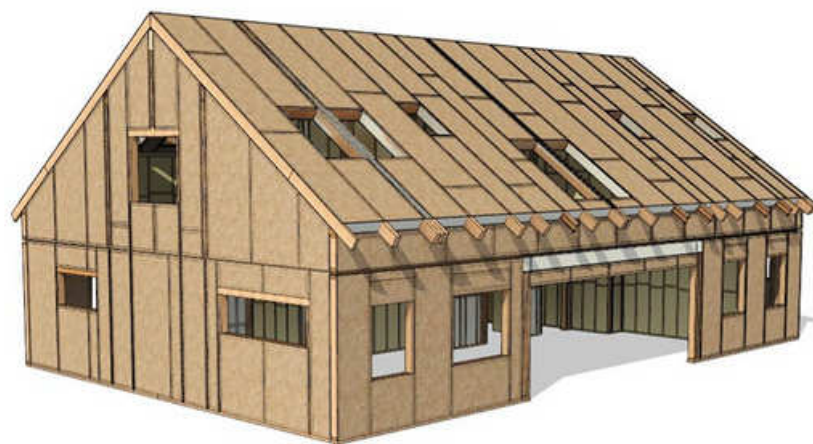
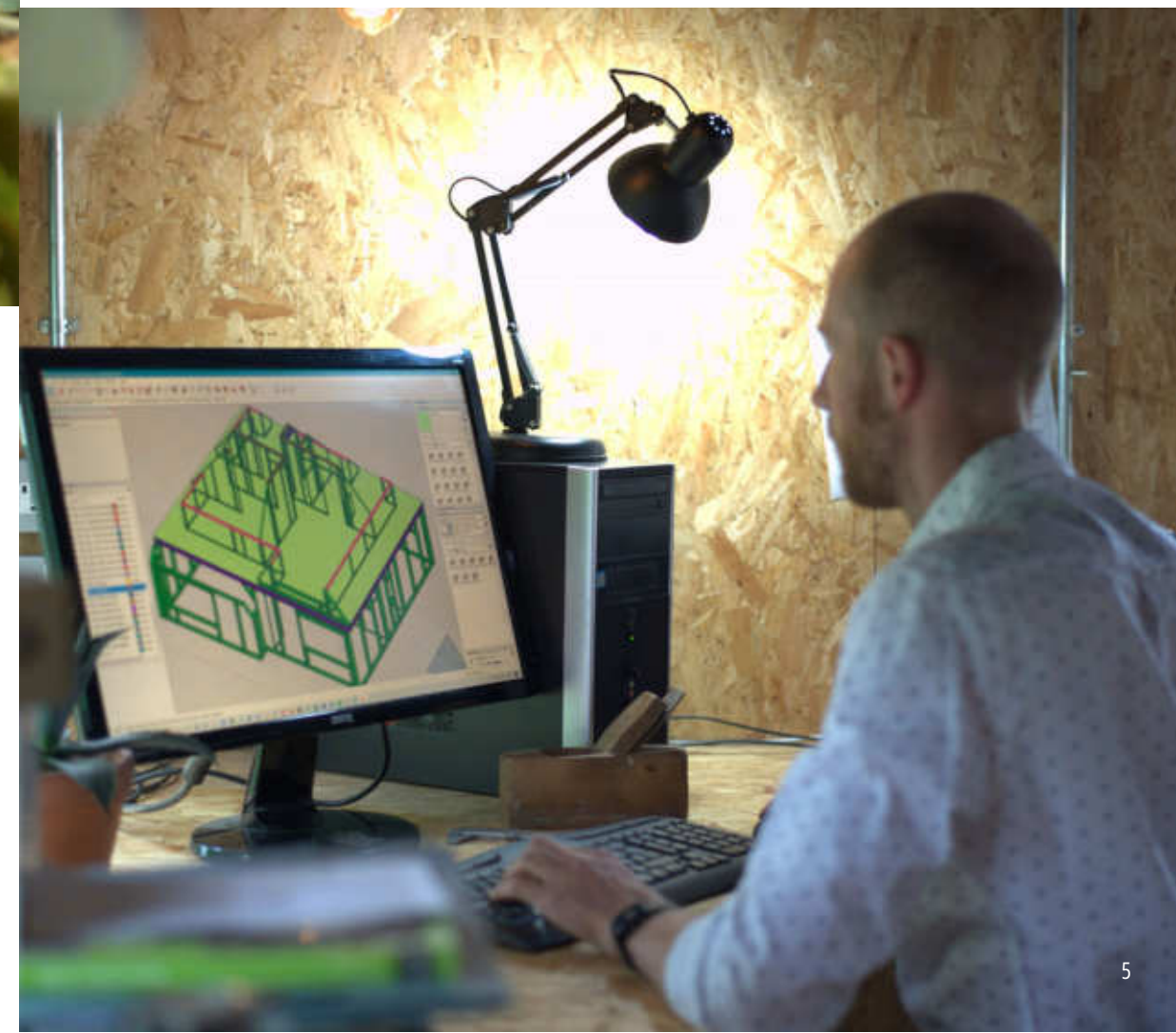



Over the past two decades, our passion for design-led eco-buildings has grown.

With **exceptional expertise** and in-depth knowledge, our team **designs resilient, low-impact structures** to your **architect's specifications**.

If your project has been **designed with traditional construction** methods in mind (eg. cavity walls), we can easily **re-engineer the drawings** to create a more **sustainable SIPs structure** often winning **increased internal floorspace** in the process.

**All clients are invited** to our **New Forest SIPs Design Studio** to approve drawings in a **3d Revit model**.



A photograph of a modern two-story house at dusk. The house has a dark grey roof with a gable end and a dormer window. The exterior is a mix of light grey and dark grey panels. The house is illuminated from within, and there are three warm-toned lights above the garage. The house number "12" is visible next to the white front door. The house is surrounded by other residential buildings.

A home constructed using **SIPs** can be **erected up to 60% faster** than traditionally constructed buildings. SIPs create a **lightweight** shell structure which is easy to handle and **extremely quick to assemble** once a foundation slab or footings have been installed.





We work closely with clients to find the **most eco-friendly, resourceful, and energy-efficient solutions** and always endeavour to **minimise our impact on the planet**. Our panels can achieve **Passive house standards** and over-achieve on the new **Part L 2022 u-value targets** for walls and roofs.



Willen Farm, Sherborne, Dorset - Photography courtesy of Dug Wilders Photography

We were honoured to have been named **winners** of the 'Best SIPs Home' at the prestigious **Build It Awards 2023**. This award gives us the motivation to continue to **strive for excellence** in what we do and to move more home builders away from using masonry and towards more modern methods of construction (MMC) like SIPs.





Golf Links Road, The New Forest, Dorset - Photography courtesy of Dug Wilders



**STRUCTURAL  
TIMBER  
AWARDS**

**2024  
WINNER**

**SIPS PROJECT  
OF THE YEAR**

We're honoured to have won the **'SIPs Project of the Year'** at the **2024 Structural Timber Awards**. Achieving this in just two years, against strong competition, highlights **our impact and the quality that sets us apart**. We're proud of our team's dedication and excited to keep raising the bar in sustainable building solutions.

## Why choose Ecologic SIPs?



SIPS engineered and manufactured in UK to the highest standards



Independently tested products meeting latest Building Regulations Parts L and Q



Customised and bespoke SIPs design and structural engineering



Clear detailed estimates to provide cost control and certainty



Comprehensive technical surveys to ensure compliance with Building Control



Relationships with architects



A dedicated project manager and contracts manager



Expert installation by STA certified carpentry teams



Ecologic 10 year warranty and support



**ECOLOGIC**  
SUSTAINABLE SIP STRUCTURES

Our SIPs Workshop and Showroom in Bransgore spans 250 square meters and is situated in the heart of the New Forest National Park. Here, we proudly display our SIPs building systems for you to explore. It's an ideal opportunity to see, feel, and immerse yourself in the excellence of our products while meeting some of our dedicated team members.

Rest assured, our knowledgeable experts are readily available. They will engage with you to understand your ideas, interpret your vision, and lead you towards a tailored solution that suits your needs perfectly.

Looking forward to your visit!

**Visit our SIPs workshop** nestled in the heart of the New Forest National Park and take a trip to a **local SIPs construction site** nearby



**ECOLOGIC**

CARE | INSPIRE | CRAFT

CALL US ON: 01425 839 291

EMAIL: [contact@ecologic-sips.co.uk](mailto:contact@ecologic-sips.co.uk)

[www.ecologic-sips.co.uk](http://www.ecologic-sips.co.uk)



**Ecologic SIPs**

Reviews 70 • Excellent



✓ VERIFIED COMPANY